



Weyn-Lauwers N.V.

Industriepark-Noord 12
B - 9100 SINT-NIKLAAS

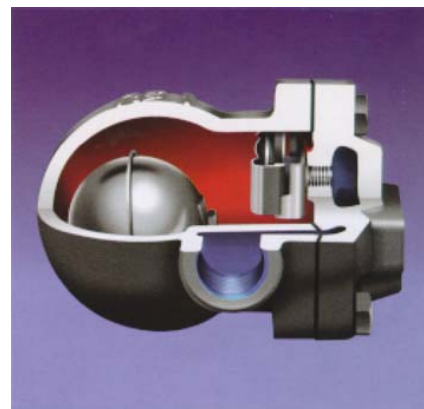
Tel. : 00 32 (0)3 776.34.13
Fax : 00 32 (0)3 778.09.52
weynlauwers@weynlauwers.be
www.weynlauwers.be

FLOAT STEAM TRAP SK51 DUCTILE IRON PN16

FLOAT STEAM TRAP SK51

CHARACTERISTICS

The SK 51 is a float trap dedicated to the draining of condensate in the steam lines. The SK51 has a ductile iron body with threaded or flanged connections with DIN 2533 face to face dimension. This steam trap is able to drain large capacities of condensate and is well adapted to the changes of flowrates. For this reason it is recommended for the draining of process like heat exchangers, autoclaves, condensors in the field of chemical processing, food and drugs industries. As a standard the SK51 is fitted with an thermostatic capsule for air elimination in starting phase. It must be installed horizontally and several mechanisms are available depending on the differential pressure.

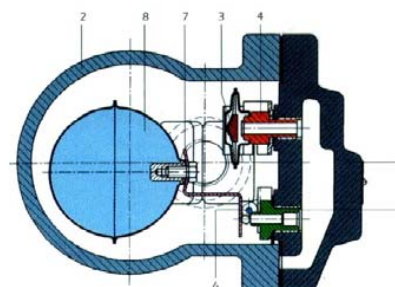


LIMITS OF USE

Maximum operating pressure : 16 bar
Maximum operating temperature : 250°C

CONSTRUCTION

N°	Item	Matière
1	Body	SG iron EN-GJS-400-18
2	Cover	SG iron EN-GJS-400-18
3	Gasket	Graphite-SS
4	Thermostatic capsule	Stainless steel / hastelloy
5	Seat (air)	304 stainless steel
6	Seat (condensate)	304 stainless steel
7	Lever	304 stainless steel
8	Float	304 stainless steel



AVAILABLES MODELS

BSP threaded connections 1/2" - 3/4" - 1"

DN15,20 and 25 flanged connections PN16/25/40

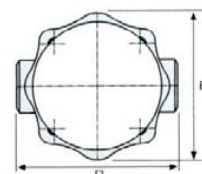
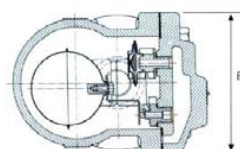
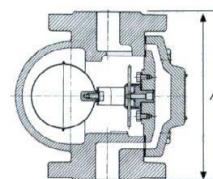
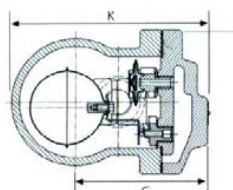
ΔP 4,5 / 10 / 14 bar

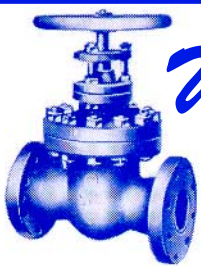
CLASSIFICATION ACC. TO PED 97/23

A3 § 3

DIMENSIONS

DN	A	K	B	B1	C	D
15	150	150	108	105	68	122
20	150	150	108	105	68	122
25	160	167	108	110	107	145





Weyn-Lauwers N.V.

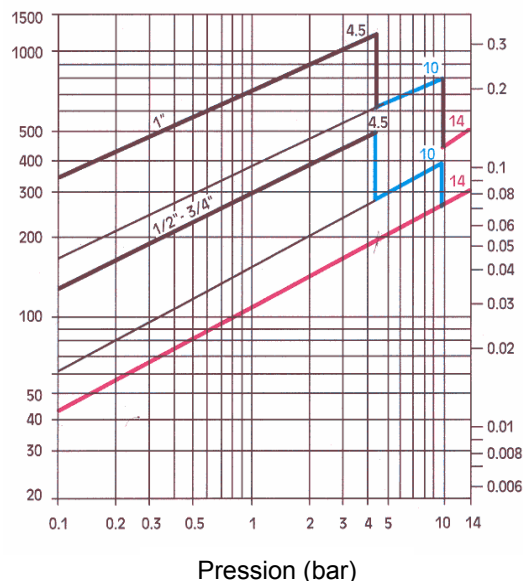
Industriepark-Noord 12
B - 9100 SINT-NIKLAAS

Tel. : 00 32 (0)3 776.34.13
Fax : 00 32 (0)3 778.09.52
weynlauwers@weynlauwers.be
www.weynlauwers.be

FLOAT STEAM TRAP SK51 DUCTILE IRON PN16

FLOAT STEAM TRAP SK51

FLOWRATES (kg/h)



Size	N° of bolts	Diameter	Lenght
15 and 20	4	M14	50
25	4	M16	60
32, 40 et 50	4	M16	110

DIS-ASSEMBLING AND MAINTAINING

It is not necessary to disassemble the trap from the pipe to proceed to his maintaining :

1. Shutt-off the upstream valve.
2. Drain the downstream line.
3. Verify that there is no pressure and temperature inside the line.
4. Unscrew the 4 bolts of the cover (item 2).
5. Verify the state of the float (item 8). Also verify the state of the lever and the seat (item 5). Clean and/or replace the damaged parts if necessary.
6. Verify the state of the capsule (item 4). Replace it if necessary and clean the seat.
7. Replace the body gasket (item 3) and re-assemble the cover (item 2).

INSTRUCTIONS FOR INSTALLATION

The SK51 steam trap must be installed at the lowest point of the piping to drain. As a standard, it is delivered for horizontal installation. Upstream the trap it is recommended to install a shut-off valve and a Y strainer to avoid any damage on the seat due to the passing of impurities. Downstream the trap must be connected to the condensate loop or to the sewage.

While installing the SK51, the right position has to be respected to allow the operation of the trap. Please respect the following two directions:

1 / SK51 has to be installed horizontally taking care of the direction of the arrow stamped on the body : from steam pipe (upstream) to condensate pie (downstream).

2 / Moreover the arrow written on the nameplate must be pointed to the ground.

Before installing the trap, shut of the line and remove the pressure. Wait for complete cooling of the line before any operating. Clean carefully the upstream line. Screw the trap on the line after having verified the direction of the two arrows. For the flanged type, use flange's gaskets adapted to steam service. For the bolting of the flanges, use following dimensions.