



Weyn-Lauwers N.V.

INDUSTRIEPARK-NOORD 12
B - 9100 SINT-NIKLAAS

TEL. 0032 (0)3 776.34.13
FAX. 0032 (0)3 778.09.52

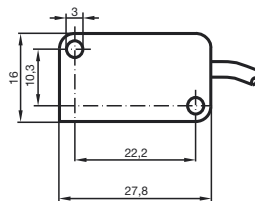
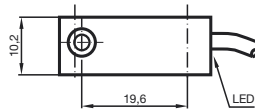
weynlauwers@weynlauwers.be
www.weynlauwers.be

PEPPERL & FUCHS
NBB2-V3-E2

Inductive proximity switches

NBB2-V3-E2

Basic series
2 mm embeddable



CE

General specifications	
Switching element function	PNP Make function
Rated operating distance s_n	2 mm
Installation	embeddable
Assured operating distance s_a	0 ... 1,62 mm
Reduction factor r_{AI}	0,35
Reduction factor r_{Cu}	0,2
Reduction factor r_{V2A}	0,7
Nominal ratings	
Operating voltage U_B	10 ... 30 V
Switching frequency f	0 ... 1000 Hz
Reverse polarity protection	all connections
Short-circuit protection	pulsing
Voltage drop U_d	≤ 3 V
Operating current I_L	0 ... 100 mA
Off-state current I_r	0 ... 0,5 mA typ. 0,1 μ A at 25 °C
No-load supply current I_0	≤ 15 mA
Indication of the switching state	LED, yellow
Standard conformity	
Standards	EN 60947-5-2
Ambient conditions	
Ambient temperature	-25 ... 70 °C (248 ... 343 K)
Mechanical specifications	
Connection type	0.1 m, PVC cable
Core cross-section	0.14 mm ²
Housing material	PBT
Sensing face	PBT
Protection degree	IP67

Connection type:

E2

