



Weyn-Lauwers N.V.

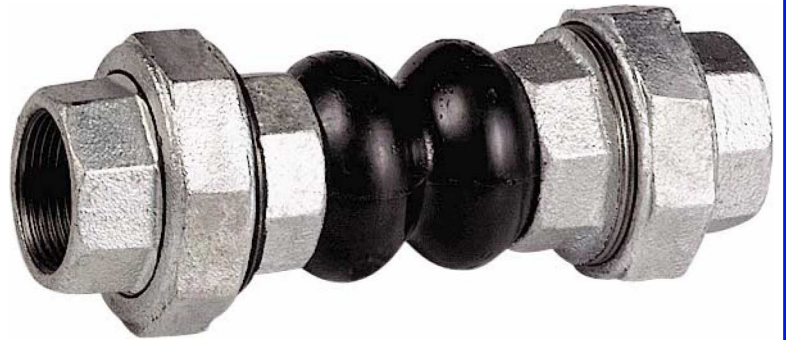
Industriepark-Noord 12
B - 9100 SINT-NIKLAAS

Tel. : 00 32 (0)3 776.34.13
Fax : 00 32 (0)3 778.09.52
weynlauwers@weynlauwers.be
www.weynlauwers.be

**EXPANSION JOINT
EPDM
FIG 970**

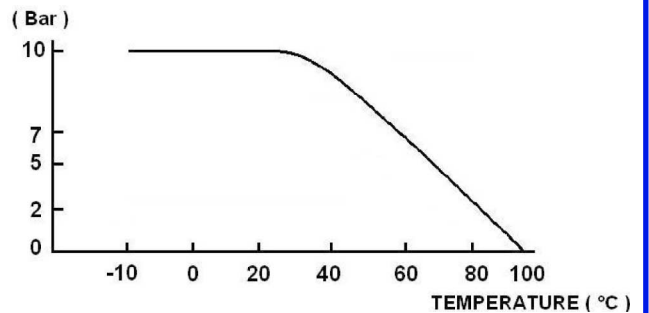
DESIGN FEATURES

- expansion joint 1/2" - 3" PN10
- EPDM bellow
- temp : -10°C +100°C
- specifications :
 - absorbs vibrations and noises
 - linear and angular compansion
 - double sphere



USE

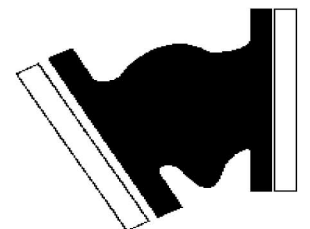
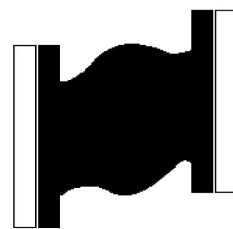
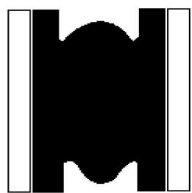
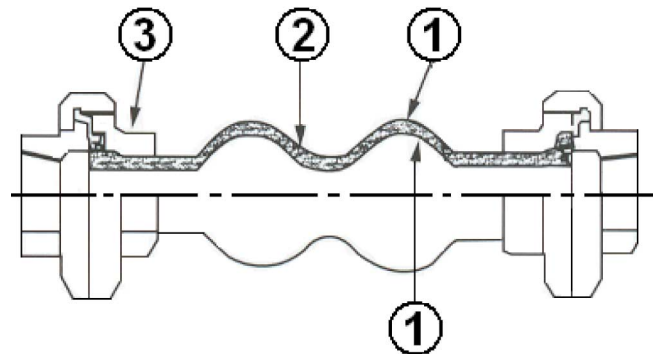
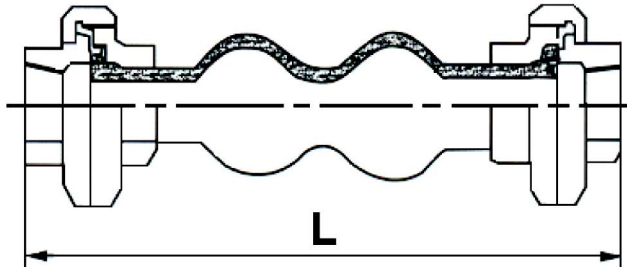
- for water distribution
- max. pressure : up to 10 bar (see graph)



MATERIALS

item	Part name	Material
1	bellow	EPDM
2	reinforcement	nylon cord
3	fittings	galvanized cast iron

SIZE (in mm)



Compansion

Expansion

Lateral

Angular

DN	1/2"	3/4"	1"	5/4"	6/4"	2"	2 1/2"	3"
L	200	200	200	200	200	200	240	240
compansion	22	22	22	22	22	22	22	22
expansion	6	6	6	6	6	6	6	6
lateral	22	22	22	22	22	22	22	22
angular	45'	45'	45'	45'	45'	45'	45'	45'
kg	0,43	0,63	0,94	1,41	1,77	2,32	3,58	4,88
ref.	205168	205169	205170	205171	205172	205173	205174	205175