



Weyn-Lauwers N.V.

Industriepark-Noord 12
B - 9100 SINT-NIKLAAS

Tel. : 00 32 (0)3 776.34.13
Fax : 00 32 (0)3 778.09.52
weynlauwers@weynlauwers.be
www.weynlauwers.be

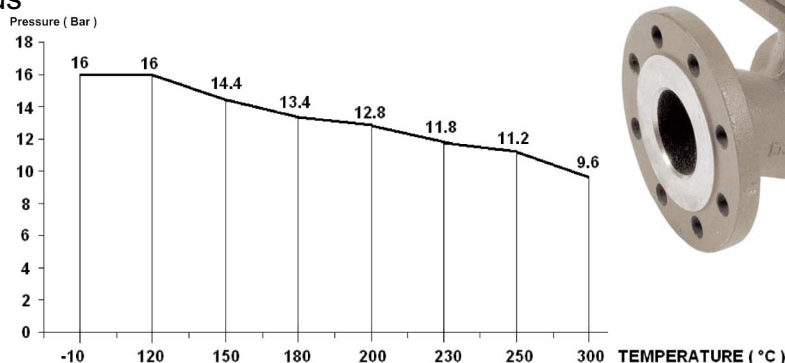
GLOBE VALVE CAST IRON - PN16 FIG 433

DESIGN FEATURES

- cast iron globe valve dn15 - dn200 PN16
- temp : -10°C +300°C
- specifications :
 - rising rotating stem and handwheel
 - bolted bonnet and gland packing
 - ! respect the flow ! (indicated by arrow)
 - single wedge disc

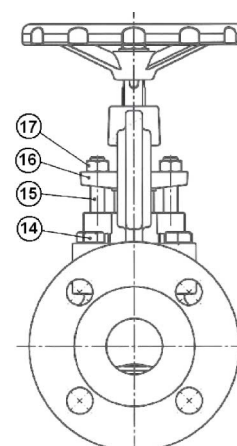
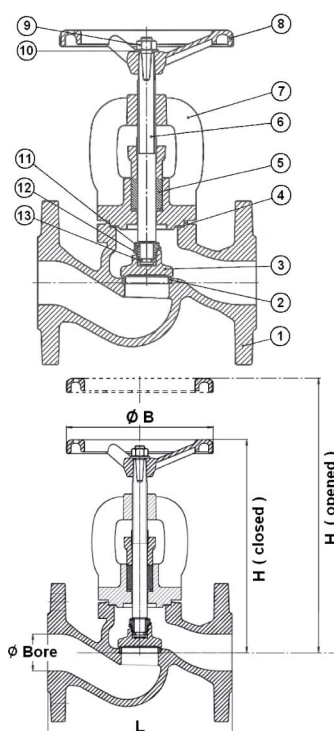
USE

- for all common fluids
- steam max. 10 bar

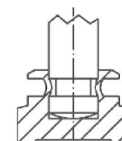


MATERIALS

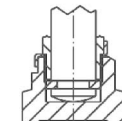
item	Part name	Material
1	body	cast iron EN GJL-250
2	seat	SS 410 (1.4406)
3	disc	SS 420 (1.4021)
4	bonnet gasket	graphite + NiCu
5	gland packing	graphite
6	stem	SS 420 (1.4021)
7	bonnet	cast iron EN GJL-250
8	handwheel	cast iron EN GJS-500-7
9	handwheel nut	galvanized steel
10	washer	galvanized steel
11*	disc screw	SS 420 (1.4021)
12*	disc washer	SS 321 (1.4541)
13*	ring	SS 420 (1.4021)
14	hexagon bolt	steel 8.8
15	T-bolt	galvanized steel 5.8
16	gland	cast iron EN GJL-250
17	gland nut	galvanized steel



DN 15 - 50



DN 65 - 150



SIZE (in mm) * : only for DN 65 to DN 200

DN	15	20	25	32	40	50	65	80	100	125	150	200
Bore	15	20	25	32	40	50	65	80	100	125	150	200
L	130	150	160	180	200	230	290	310	350	400	480	600
H open	193	194	203	212	263	273	305	355	378	420	482	606
H close	178	180	188	191	235	238	270	297	344	375	429	525
B	100	100	120	120	160	160	180	200	250	250	320	360
kg	3,3	3,9	5,0	6,6	9,5	12	17,3	22,7	35,8	52,8	72,5	126
ref.	205791	205792	205793	205794	205795	205796	205797	205798	205799	205800	205801	205802