



**Weyn-Lauwers N.V.**

Industriepark-Noord 12  
B - 9100 SINT-NIKLAAS

Tel. : 00 32 (0)3 776.34.13  
Fax : 00 32 (0)3 778.09.52  
weynlauwers@weynlauwers.be  
www.weynlauwers.be

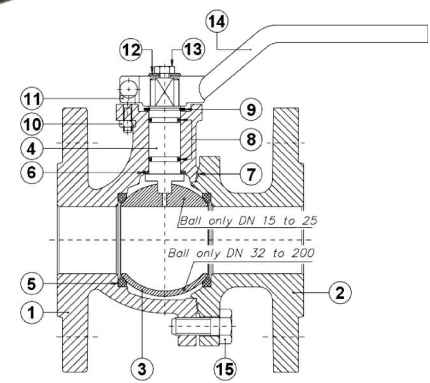
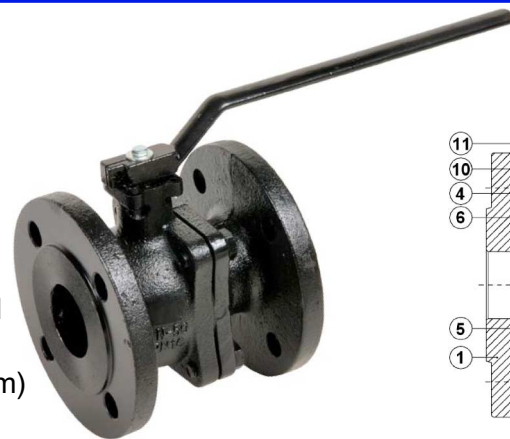
**BALL VALVE  
PN16 - FULL BORE  
CAST IRON  
FIG 148**

**DESIGN FEATURES**

- 2-PC ball valve DN15 - DN200
- Flanges acc. DIN2501 PN16
- min. : -10°C +200°C
- face to face acc. DIN3202 F4
- specifications :
  - anti-blow out stem
  - Full bore
  - mounting pad acc. ISO 5211

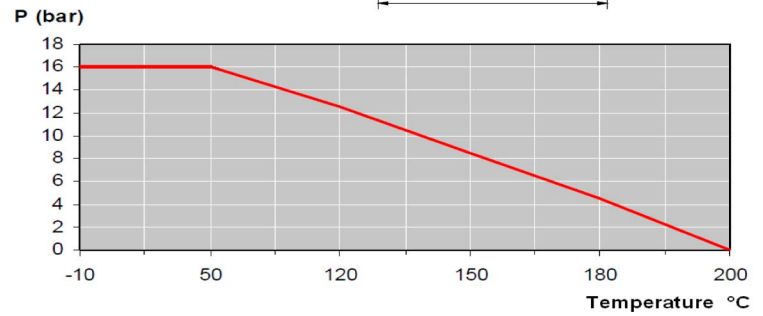
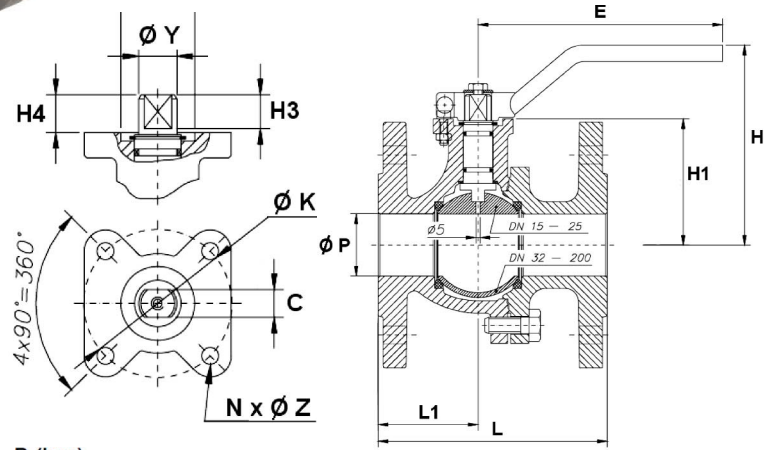
**USE**

- for all common fluids (not for steam)
- max. pressure : up to 16 bar



**MATERIALS**

| item | Part name     | Material             |
|------|---------------|----------------------|
| 1    | body          | cast iron EN GJL-250 |
| 2    | end           | cast iron EN GJL-250 |
| 3    | ball dn15-25  | SS 303               |
| 3    | ball dn32-200 | SS 304               |
| 4    | stem          | SS 304               |
| 5    | seat          | PTFE                 |
| 6    | washer        | PTFE                 |
| 7    | body gasket   | PTFE                 |
| 8    | O-ring        | viton (FKM)          |
| 9    | stem washer   | steel DIN 471        |
| 10   | nut           | steel DIN 934 8      |
| 11   | screw         | steel DIN 912 8.8    |
| 12   | handle washer | steel                |
| 13   | handle screw  | steel DIN 933 5.6    |
| 14   | handle        | steel                |
| 15   | body screw    | steel DIN 933 5.6    |



**SIZE (in mm)**

| DN        | 15     | 20     | 25     | 32     | 40     | 50     | 65     | 80     | 100    | 125        | 150        | 200    |
|-----------|--------|--------|--------|--------|--------|--------|--------|--------|--------|------------|------------|--------|
| P         | 13     | 17     | 24     | 31     | 38     | 50     | 65     | 80     | 100    | 125        | 150        | 200    |
| L         | 115    | 120    | 125    | 130    | 140    | 150    | 170    | 180    | 190    | <b>200</b> | <b>210</b> | 400    |
| L1        | 49     | 55,5   | 51,5   | 53     | 61     | 62     | 81,5   | 79     | 94     | 120,5      | 155        | 190    |
| H         | 92     | 95,5   | 102,2  | 114,7  | 119    | 127    | 141    | 151,5  | 176,5  | 208        | 254,5      | 293,5  |
| H1        | 48,5   | 53     | 59,5   | 72     | 77     | 85     | 98     | 108,5  | 134    | 165        | 190        | 229    |
| E         | 170    | 170    | 170    | 170    | 302,5  | 302,5  | 335    | 335    | 350    | 350        | 500        | 500    |
| K         | 42     | 42     | 42     | 42     | 42     | 42     | 70     | 70     | 70     | 70         | 102        | 102    |
| C         | 7      | 7      | 7      | 7      | 12     | 12     | 13     | 13     | 16     | 16         | 20         | 20     |
| Y         | 10     | 10     | 10     | 10     | 16     | 16     | 18     | 18     | 22     | 22         | 28         | 28     |
| H3        | 5,5    | 5      | 5      | 5,5    | 16     | 16     | 19     | 19     | 20     | 20         | 27         | 27     |
| H4        | 7,5    | 6      | 6,2    | 6,7    | 15     | 15     | 18     | 18     | 19     | 19,5       | 24,5       | 24,5   |
| A         | 19     | 19     | 21     | 21     | 30     | 30     | 35     | 35     | 38     | 38         | 50         | 50     |
| ISO5211   | F04    | F04    | F04    | F04    | F40    | F04    | F07    | F07    | F07    | F07        | F10        | F10    |
| N x Z     | 4 x 5  | 4 x 5  | 4 x 5  | 4 x 5  | 4 x 5  | 4 x 5  | 4 x 8  | 4 x 8  | 4 x 8  | 4 x 8      | 4 x 10     | 4 x 10 |
| kg        | 2,12   | 2,72   | 3,62   | 5,32   | 6,9    | 9      | 11,7   | 14,7   | 20,3   | 33,8       | 49,8       | 81,8   |
| Kv (m3/h) | 37,4   | 74,8   | 105    | 176    | 223    | 416    | 660    | 1200   | 1980   | 3600       | 5040       | 10890  |
| ref.      | 148.04 | 148.05 | 148.06 | 148.07 | 148.08 | 148.09 | 148.10 | 148.11 | 148.12 | 148.13     | 148.14     | 148.16 |