

Weyn-Lauwers N.V.

Industriepark-Noord 12
B - 9100 SINT-NIKLAAS

Tel. : 00 32 (0)3 776.34.13
Fax : 00 32 (0)3 778.09.52
weynlauwers@weynlauwers.be
www.weynlauwers.be

**SWING CHECK VALVE
EPDM SEAT - PN 16
FIG 750**

DESIGN FEATURES

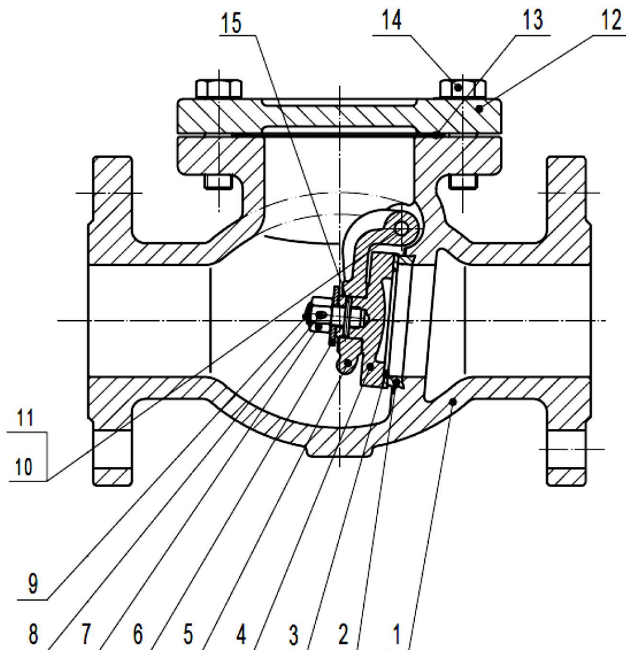
- cast iron swing check valve dn40 - dn200 PN16
- ISO PN10/16 flanges
- temp : -10°C +80°C
- specifications :
 - vertical or horizontal position
 - respect the flow direction indicated by the arrow
 - bolted bonnet

USE

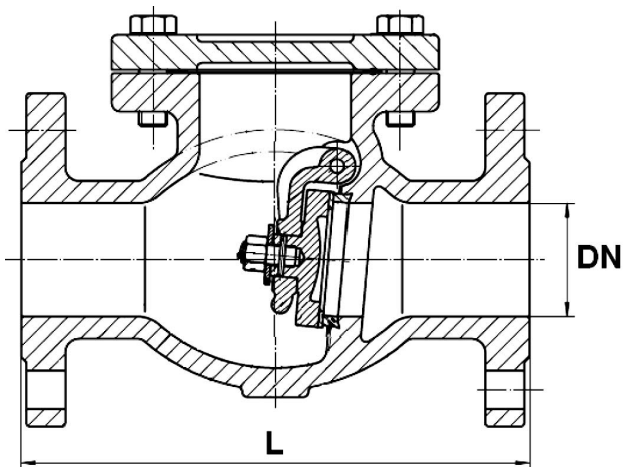
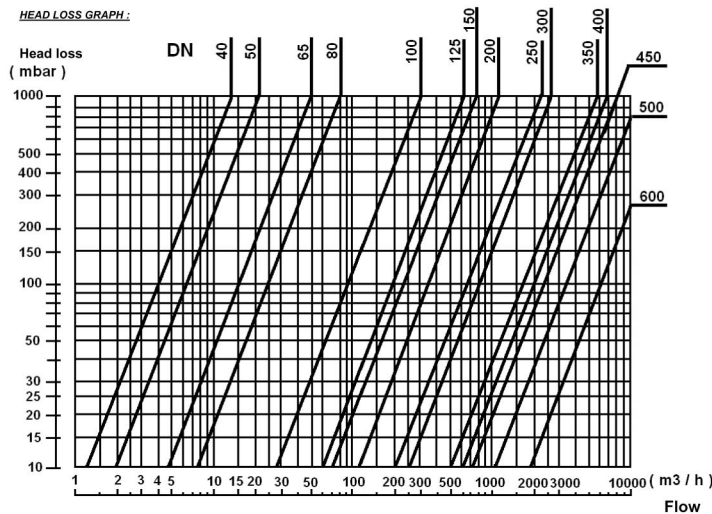
- for all common fluids
- do not use with pulsatory speed / max speed 3 m/sec

MATERIALS

item	Part name	Material
1	body	cast iron EN GJL-250
2	seat ring	brass
3	disc ring	EPDM
4	disc	cast iron EN GJL-250
5	hanger	ductile iron EN GLS-400-15
6	washer	steel
7	nut	steel
8	split pin	SS 304
9	disc screw	steel
10	hexagon plug	Brass
11	hanger pin	SS 304
12	bonnet	cast iron EN GLJ-250
13	bonnet gasket	graphite
14	bonnet screw	steel
15	pin	SS 304



HEAD LOSS GRAPH :



SIZE (in mm)

DN	40	50	65	80	100	125	150	200		
L	180	200	240	260	300	350	400	500		
kg	8,5	11,2	15,5	19	28,5	42,4	57	93		
ref.	205341	205342	205343	205344	205345	205346	205347	205340		